

800AJ

ARTICULATING BOOM LIFT

BOOM LIFT



Performance

Platform Height	24.38 m
Working Height	26.38 m
Horizontal Outreach	15.80 m
Up and Over Clearance	9.78 m
Swing	360 Degrees Continuous
Platform Capacity	230 kg
Platform Size	0.91 x 2.44 m
Platform Rotator	180 Degrees Hydraulic
Jib	1.83 m
Jib Range of Articulation	130 Degrees (+70, -60)
Weight	16,450 kg
Drive Speed	4.8 km/h
Gradeability	45%
Turning Radius (Inside)	1.83 m
Turning Radius (Outside)	3.53 m

Standard Specifications

Power Source

Diesel Engine	Deutz D2011L04
Fuel Tank Capacity	147.6 L
Fuel Consumption	3.33 L/hr

Hydraulic System

Capacity	151.4 L
Auxiliary Power	12V-DC

Tyres

Standard	18-625 Foam-Filled
----------	--------------------

Standard Features

- 4WD & 4WS
- 180 Degree Hydraulic Platform Rotator
- Platform Console Machine Status Light Panel*
- AC Generator including AC Outlets to Platform
- 4 Degree Tilt Alarm/Indicator Light
- Swing Out Engine Tray
- 12V-DC Auxiliary Power
- Hourmeter
- Proportional Controls
- Control ADE® System
- Lifting/Tie Down Lugs
- Horn
- Four-Wheel Hydrostatic Drive
- Oscillating Axle
- Operator Tool Tray
- Inward Self-Closing Self-Locking Swing Gate
- Flashing Amber Beacon
- Motion Alarm
- Glow Plugs (Diesel Engines)

*Provides indicator lights at platform control console for system distress, low fuel and foot switch status.



Accessories & Options

- 0.91 x 1.83 m Platform
- 1/2 in. Air Line to Platform
- Light Package
- Platform Worklights
- Mesh to Mid-Rail
- Special Hydraulic Oils (Consult Factory)
- Spark Arresting Muffler
- Accessory Packages
- SkyWelder® Package
- SkyGlazier® Package
- Nite Bright® Package
- SkyGuard®
- Pipe Rack
- Cable Ladder Carrier
- ClearSky®

Note: Some options may increase lead time, and some option combinations may not be available.

800AJ

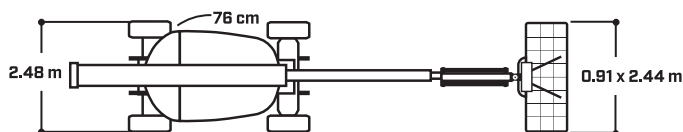
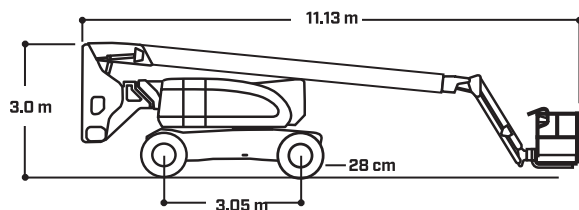
ARTICULATING BOOM LIFT

BOOM LIFT

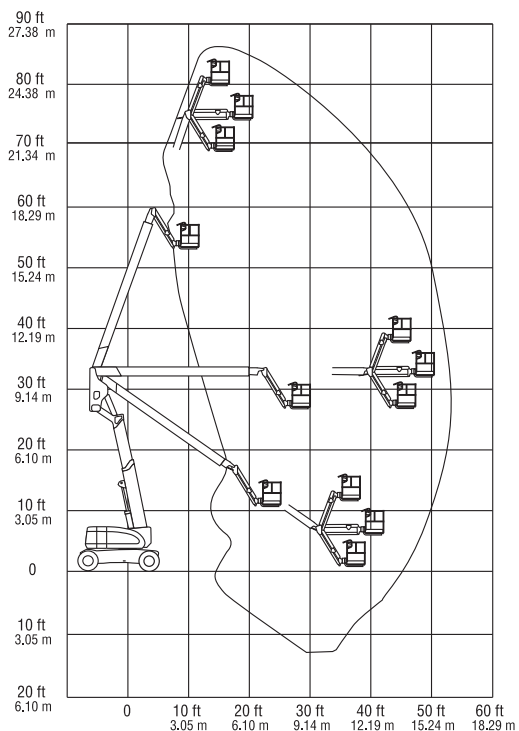


Dimensions

All dimensions are approximate.



Reach Dimensions



The JLG "1 & 5" Warranty

JLG Industries, Inc. backs its products with its exclusive "1 & 5" Warranty. We provide coverage on all products for one (1) full year, and cover all specified major structural components for five (5) years. Due to continuous product improvements, we reserve the right to make specification and/or equipment changes without prior notification. This machine meets or exceeds applicable OSHA Regulations in 29 CFR 1910.67, 29 CFR 1926.453, ANSI A92.5-2006, and CSA Standard CAN3-B354.2-M82, as originally manufactured for intended applications.

R1224



JLG Industries, Inc.
1 JLG Drive
McConnellsburg, PA 17233-9533
Telephone 717-485-5161
Toll-free in US 877-JLG-LIFT
Fax 717-485-6417
www.jlg.com
An Oshkosh Corporation Company